

ADMIRAL INSURANCE HEADQUARTERS

CARDIFF

END CLIENT: Admiral Insurance

MAIN CONTRACTOR:
Sir Robert McApLine Limited

STEEL CONTRACTORS:
Severfield Plc

SECTOR: Financial Services

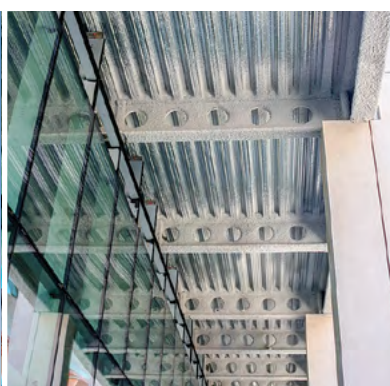
PRODUCTS & SERVICES:
Supply and installation
36,000m² ComFlor® 80 Composite Floor Decking
1,200m² RoofDek D100 Structural Roof Decking

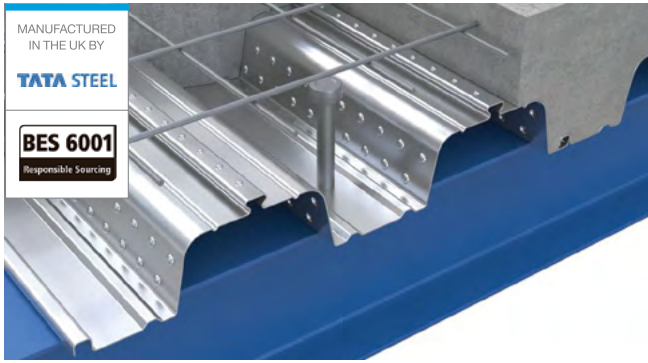
Composite Profiles were proud to be awarded the contract to supply and install 36,000m² of ComFlor® 80 Composite Floor Decking and 1,200m² of RoofDek D100 Structural Roof Decking for Admiral Insurance's prestigious headquarters in Cardiff.

The eleven-storey building features a pale stone clad finish and large expanses of glass allowing maximum natural daylight infiltration to every floor and is serviced by a subterranean car park for up to 120 vehicles.

Endorsed by the Design Commission for Wales, Admiral Insurance's flagship offices received the BREEAM 'excellent' status for environmental sustainability and energy efficiency setting the benchmark for sustainable office buildings of the future.

“ Being so close to major transport networks presented some tough logistical challenges that we had to overcome. Fortunately, we can deliver more than 1,000m² of metal decking on a single vehicle, far in excess of that offered by pre-cast concrete, which minimised the number of delivery vehicles and congestion for local businesses. The speed of installation offered by ourselves with ComFlor® 80 and RoofDek D100 also reduced the environmental impact to the surrounding area. Meticulous planning and on-site management by the Composite Profiles' team definitely added to the overall success of this project. - Mark Harley, Senior Project Manager, Composite Profiles





PRODUCT INFO

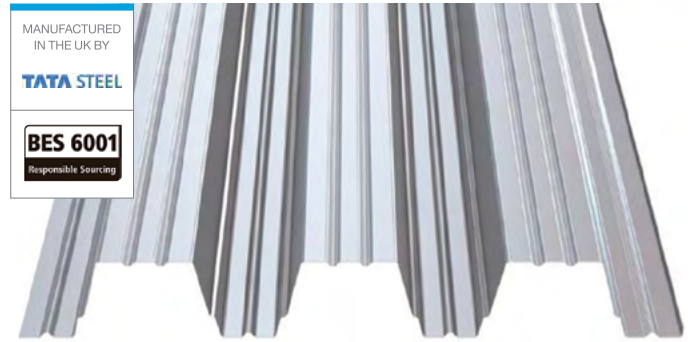
36,000m² **ComFlor® 80** Composite Floor Decking

BENEFITS OF PRODUCT

- Cost effective
- Long spanning
- Speed of installation
- Reduced concrete requirements
- Access for next trade

TECHNICAL VIEW

“ The ComFlor® 80 decking system provided the most cost-effective solution due to its long-spanning capabilities and reduced concrete requirements. The ComFlor® 80 profile was easily able to span the typical 3.675m bays. It also provided a fast deck installation enabling not only the steel erection to progress at speed but other trades were also able to access the lower floors ahead of programme. The RoofDek D100 Structural Roof Decking also offers exceptional spanning capabilities and loading capacity. With spans of 3.5m, the choice of RoofDek D100 added to the overall efficiency of the build, especially speed of installation. - Joel Nurser, Operations Director Composite Profiles



PRODUCT INFO

1,200m² **RoofDek D100** Structural Roof Decking

BENEFITS OF PRODUCT

- Robust long span deck
- Speed of installation
- Span range up to 7m
- Available with Colorcoat® High Reflect
- Available perforated in acoustic range
- Aluminium options in 0.9mm and 1.2mm

PROJECT SOLUTIONS

THE CHALLENGE

Two major requirements for the project was for it to protect natural resources and to enhance the well-being of the people who live and work within the building and its surrounds. The development was targeted to achieve a BREEAM standard for environmental sustainability and energy efficiency. In addition to creating an efficient workspace with internal relaxation areas; a tall, colonnaded external walkway was commissioned to feature public cafes and restaurants to complement the St David's food court. The outside area was landscaped to offer local office workers and shoppers natural places to sit and relax during lunch breaks.

OUR SOLUTION

Composite Profiles' Project Manager, Mark Harley, was responsible for delivering the ComFlor® 80 and RoofDek D100 metal decking solutions for our clients, overcoming tight programme requirements. Mark spent many months in the planning and construction phases of the project to ensure that all contractors on site would work safely and efficiently together to prevent time delays.

As approved contractors for Tata Steel, coupled with our technical knowledge of their products meant we could offer access to the only metal decking with BES 6001 Responsible Sourcing standard, which was a strong contributing factor to the project achieving its BREEAM 'excellent' status.

PROJECT DATA

- Budget: £450,000
- Timescale: 25 weeks
- Install Teams: 8 installers
- Total area: 37,200m²
- Other contractors on site: 15
- Sandwiches eaten: 1,000

